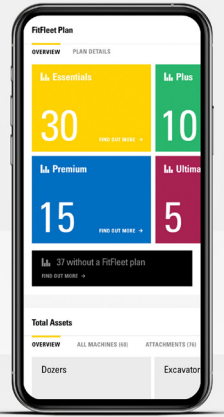


INTRODUCING

Fit Fleet[®]

For Technology



MAKING EVERYDAY EASY



GET INVOLVED

Support your new Cat® Next Generation Performance Excavator with a FitFleet® for Technology agreement.

Your Next Generation Performance Excavator is equipped with the latest technology that Caterpillar® has to offer. A FitFleet for Technology agreement is your end-to-end technology solution, delivering data-driven insights into the overall health and utilisation of your excavator, whilst helping you get the most out of your machine with personalised technology support from WesTrac.

FitFleet for Technology can be applied to all FitFleet agreement levels for your excavator, adding additional benefits on top of the standard Essentials, Plus, Premium and Ultimate agreements. FitFleet for Technology is included on all Next Gen Performance Excavators with 3D Cat Grade for the first year of ownership when signed up to any FitFleet agreement. Discover the four levels of FitFleet below.

	📊 Essentials	📈 Plus	📊 Premium	📈 Ultimate
DATA-DRIVEN INSIGHTS	■	■	■	■
CAT PARTS DELIVERED	■	■	■	■
MAINTENANCE ADVICE AND INSTRUCTIONS	■	■	■	■
FLUID HEALTH ADVICE	■	■	■	■
SMOOTH CASH FLOW		■	■	■
WESTRAC TECHNICIANS PERFORM MAINTENANCE			■	■
YOUR ULTIMATE MAINTENANCE AND REPAIR PARTNER				■



Get the most out of your Next Gen Performance Excavator and scan the QR code for T&C's and more information.

WHAT'S INCLUDED

On top of the standard benefits from your agreement, with FitFleet for Technology you'll also receive:



MACHINE SUPPORT

As part of your agreement, you'll receive hardware warranty, software updates and Caterpillar Annual Product Updates on-site. You'll also have access to a dedicated support team to assist you with issue resolution and operational advice via WesTrac's Technology Support System.



SITE ENVIRONMENT SUPPORT

The infrastructure off board the machine is known as the Site Environment. Partnering with SITECH Solutions, this support will help you identify correction sources and design file requirements as well as issues associated with these. This support will also be provided on-site via WesTrac's Technology Support System.



TECHNOLOGY TRAINING

WesTrac and SITECH will provide on-site Cat technology training that enables you to get the most out of your excavator.

BENEFITS PROVIDED	FITFLEET FOR TECHNOLOGY MACHINE SUPPORT	FITFLEET FOR TECHNOLOGY SITE ENVIRONMENT SUPPORT
REMOTE SUPPORT WITH PHONE ASSISTANCE	■	
EMAIL SUPPORT AND OPERATOR INSTRUCTION	■	
3-YEAR WARRANTY ON TECHNOLOGY HARDWARE	■	
TECHNOLOGY SUPPORT SYSTEM - PRIORITY ACCESS	■	
PRIORITY RESPONSE FOR TECHNOLOGY PRODUCT ISSUES	■	
ANNUAL TECHNOLOGY SERVICE/AUDIT AND SOFTWARE UPDATES	■	
LEVEL 1 TRAINING – INTRODUCTION TO CAT NEXT GEN EXCAVATOR TECHNOLOGY – DELIVERED BY WESTRAC REMOTELY	■	
LEVEL 2 TRAINING – CAT GRADE TRAINING – DELIVERED BY WESTRAC ON SITE	■	
LEVEL 3 TRAINING – CAT GRADE SITE INTEGRATION – DELIVERED BY SITECH SOLUTIONS ON SITE		■
SUBSCRIPTION ASSISTANCE AND 3D PROJECT MANAGEMENT		■
SITECH DESIGN UPLOADS SUPPORT		■
ACCESS TO GLOBAL TRIMBLE DEALER RESOURCES WITHIN SITECH/UPG ENGINEERING SERVICES TO DIAGNOSE THE MACHINE OR THE SITE ENVIRONMENT CAUSING DOWNTIME.		■

TECHNOLOGY TRAINING

All three levels of training are included with our FitFleet for Technology solution and can also be purchased separately.

LEVEL 1

INTRODUCTION TO CAT NEXT GEN EXCAVATOR TECHNOLOGY

Delivered remotely, this training session is designed to inform and familiarise you on the technology and updates for the Next Gen range. Led by the instructor, you will navigate on your own technology training tablet to learn the ins and outs of the Machine Monitor Screen, Payload, Assist Modes, E-fencing, as well as the setup and control of operator profiles, tool setup and operator comforts.

LEVEL 2

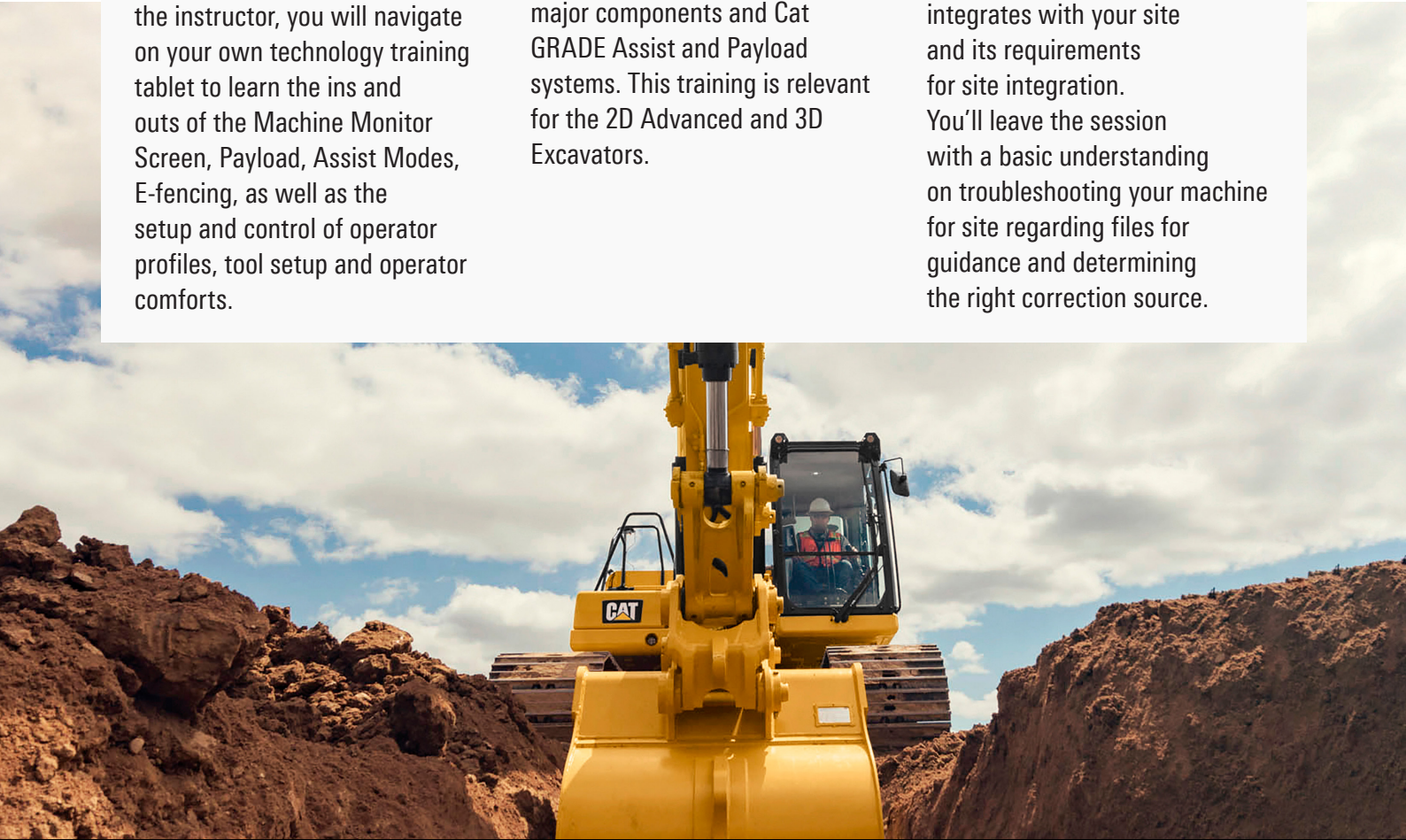
CAT GRADE TRAINING

Delivered at your jobsite, this training session is designed to increase your level of understanding of Cat Next Gen GRADE Technology. This includes major components and Cat GRADE Assist and Payload systems. This training is relevant for the 2D Advanced and 3D Excavators.

LEVEL 3

CAT GRADE TRAINING SITE INTEGRATION TRAINING

Delivered at your jobsite, this training is designed to ensure that you and your operator understand how your Next Gen Excavator integrates with your site and its requirements for site integration. You'll leave the session with a basic understanding on troubleshooting your machine for site regarding files for guidance and determining the right correction source.



FitFleet[®]

Powered by WesTrac

Terms & Conditions: Offer 1. Offer is only available to business owners that hold an ABN and, in the case of individual sole traders, are Australian residents over the age of 18. 2. "FitFleet for Technology" is included for new Cat[®] NextGen Excavators with 3D Technology sold with a FitFleet Essentials, Plus, Premium or Ultimate Package from the 01/05/2021. A sale contract must be executed, and the machine delivered on or contract delivered before 31/12/2021 to qualify. 3. Purchases are subject to WesTrac's Term and Conditions for the Sale of Goods and Services available at <https://www.westrac.com.au/terms>. 4. The offer is available while stocks last and can be withdrawn or changed by WesTrac at any time without notice. 5. This offer cannot be used in conjunction with any other offer. 6. To receive the "FitFleet for Technology" customers must have signed a FitFleet agreement on the sales contract or prior to machine delivery. 7. "FitFleet for Technology" is valid free of charge for 1-year from the date of machine delivery. Following the 1-year period, Customers are able to purchase the "FitFleet for Technology" in addition to their FitFleet agreement. FitFleet[™] 8. Registration in FitFleet[™] is subject to a WesTrac FitFleet[™] Agreement being executed. FitFleet[™] service levels, inclusions and pricing vary. For further information see www.westrac.com.au/services/FitFleet. © 2021 WesTrac Pty Ltd and Caterpillar. All Rights Reserved. CAT, CATERPILLAR, LET'S DO THE WORK, their respective logos, "Caterpillar Corporate Yellow", the "Power Edge" and Cat "Modern Hex" trade dress as well as corporate and product identity used herein, are trademarks of Caterpillar and may not be used without permission.